

02

| ELEMENTS OF COLORS

| OPULENCE MOTIFS

| BLEND IN METAL & TEXTURE

MODERN
& GLAM

THE ART OF SPACE

VOLUME
02

Phase 1

OPULENCE MOTIFS

Phase 2

ELEMENTS OF COLORS

Phase 3

BLEND IN METAL
&TEXTURE

M & G



The Art



M O D E R N A N D G L A M



*of
Space*

M&G

• 7738



7738-1



7738-2

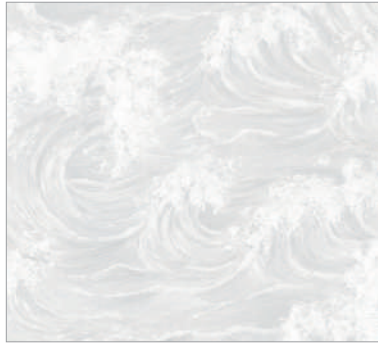


7738-3

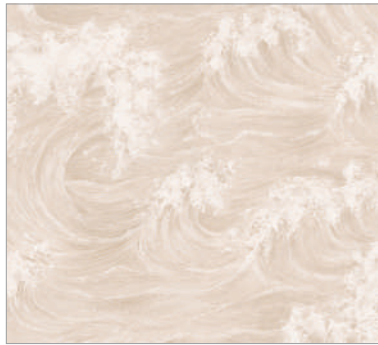


7738-4

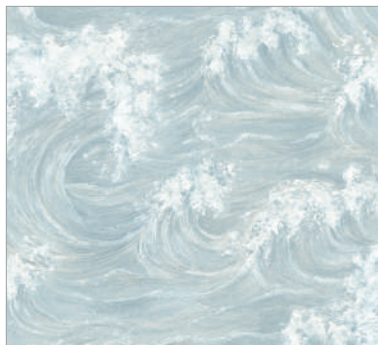
• 7737



7737-1



7737-2



7737-3

• 7736



7736-1



7736-2



7736-3

M O D E R N A N D G L A M

• 7735 _____



7735-1

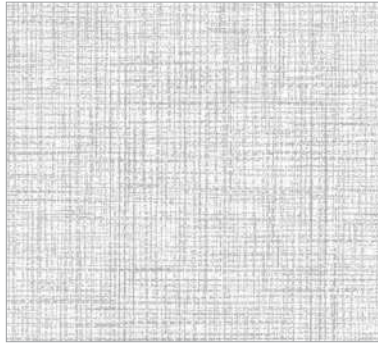


7735-2

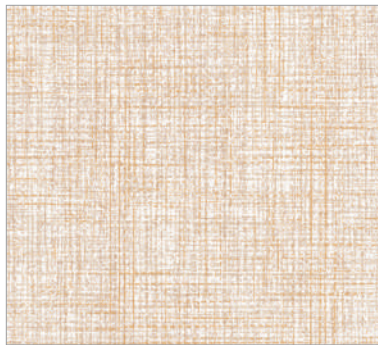


7735-3

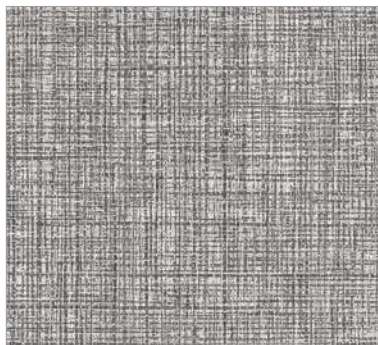
• 7734 _____



7734-1



7734-2



7734-3



7734-4

• 7733 _____



7733-1



7733-2

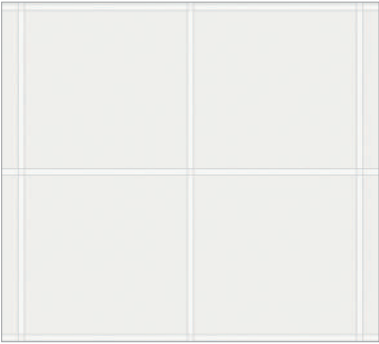


7733-3

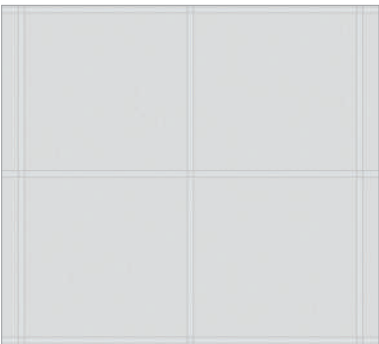


7733-4

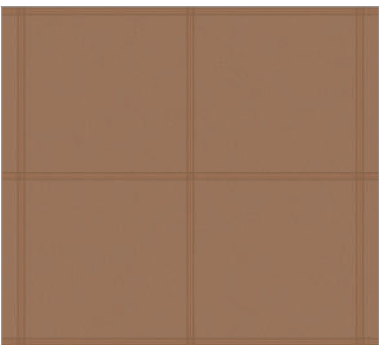
• 7732 _____



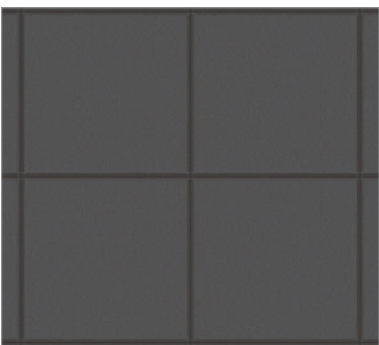
7732-1



7732-2



7732-3



7732-4

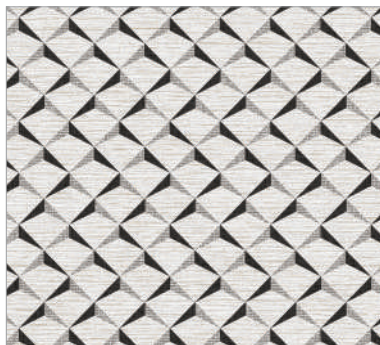
• 7731 _____



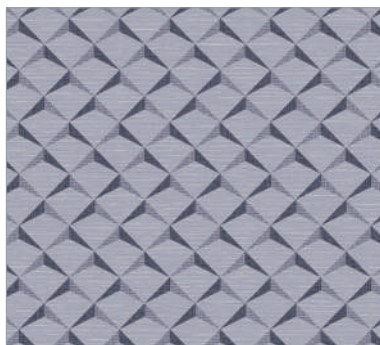
7731-1



7731-2



7731-3



7731-4

• 7730 _____



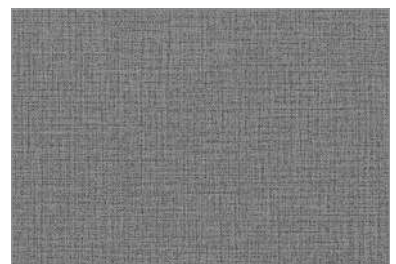
7730-1



7730-2



7730-3



7730-4



7730-5

• 7729 _____



7729-1



7729-2



7729-3

• 7728 _____



7728-1



7728-2

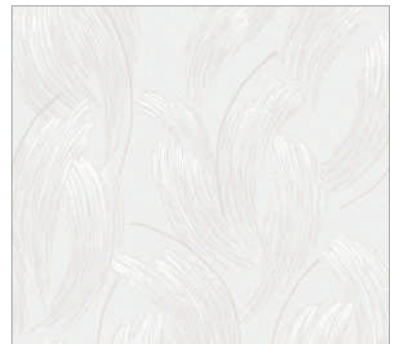


7728-3



7728-4

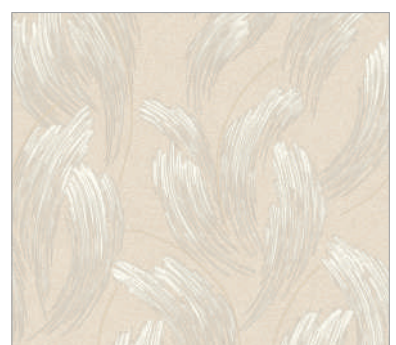
• 7727 _____



7727-1



7727-2



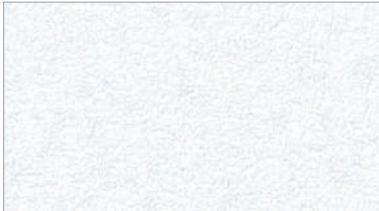
7727-3



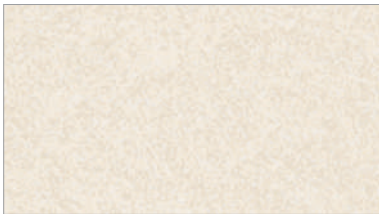
7727-4

The Art of
Space.

• 7726 _____



7726-1



7726-2



7726-3



7726-4



7726-5



7726-6

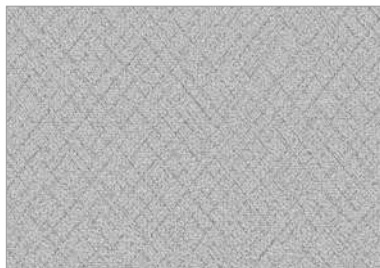
• 7725 _____



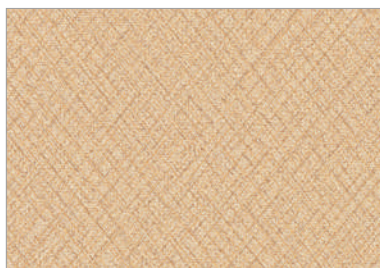
7725-1



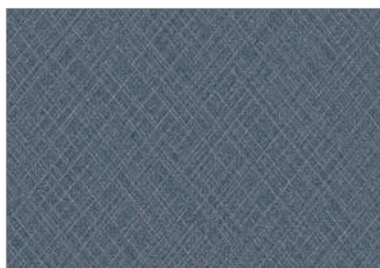
7725-2



7725-3

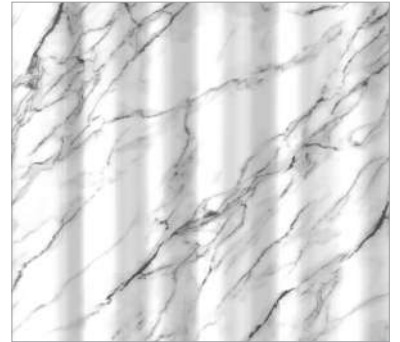


7725-4

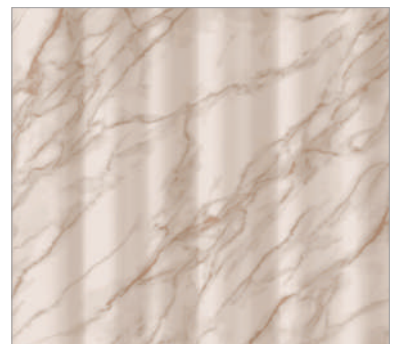


7725-5

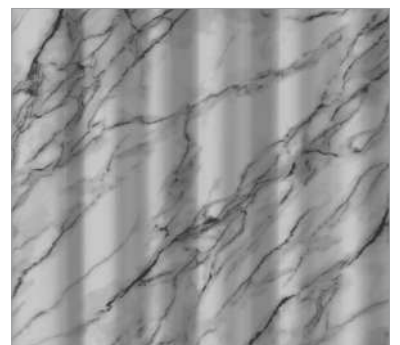
• 7724 _____



7724-1



7724-2



7724-3

• 7723



7723-1



7723-2

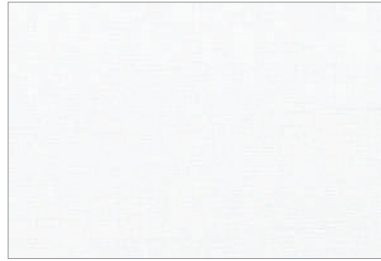


7723-3



7723-4

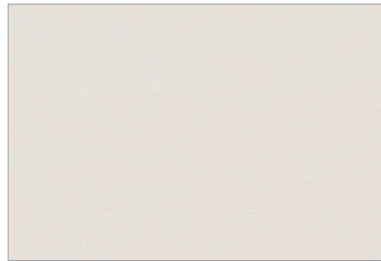
• 7722



7722-1



7722-6



7722-2



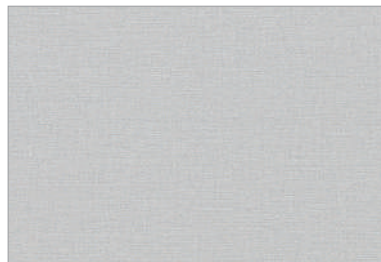
7722-7



7722-3



7722-8



7722-4



7722-9



7722-5

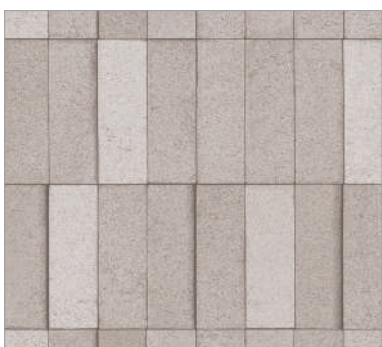


7722-10

• 7721 _____



7721-1



7721-2



7721-3

• 7712 _____



7712-2

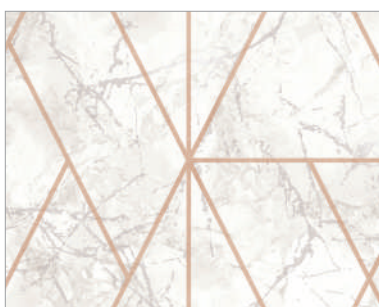


7712-3

• 7711 _____



7711-2



7711-3

THE ART OF SPACE

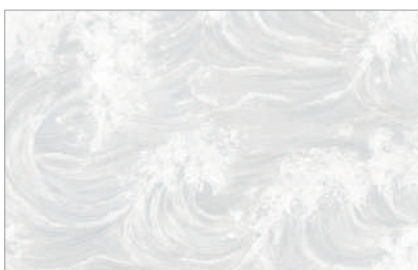
Phase 1



OPULENCE MOTIFS



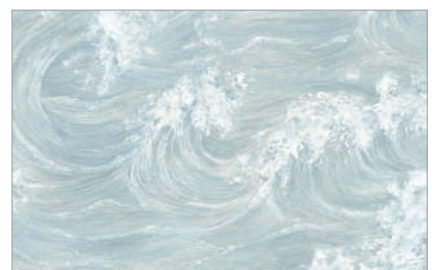
7737-3



7737-1



7737-2



7737-3



Wallpaper with a large wave breaking.
It would make a unique and stylish feature in your home.

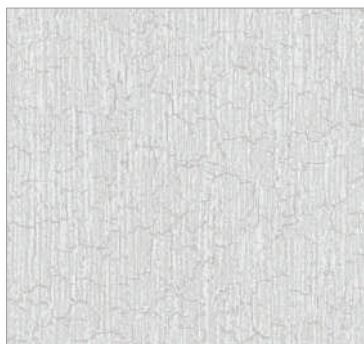
7730-2 + 7737-2

NATURE

7738-4



7738-1



7738-2



7738-3



7738-4

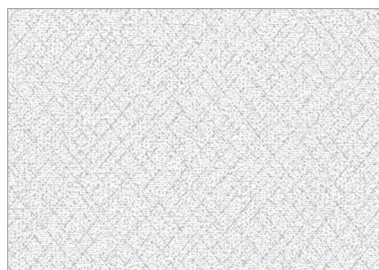


SIMPLY CHARMING

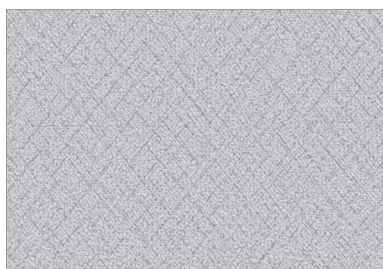
7725-5 + 7725-2



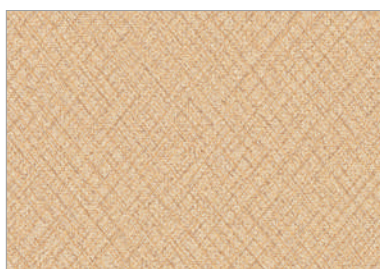
7725-1



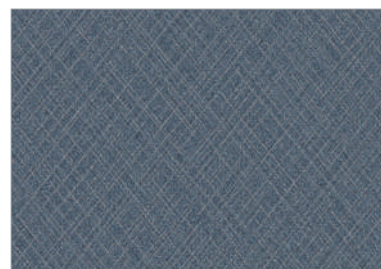
7725-2



7725-3



7725-4



7725-5

THE ART

THAT REFLECTS

YOUR

PERSONALITY



7736-1



7736-1



7736-2



7736-3



FLUTED TIMBER

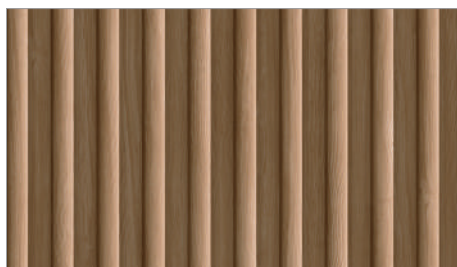
Unique wallpaper that provides
a personal sanctuary within everyday life.



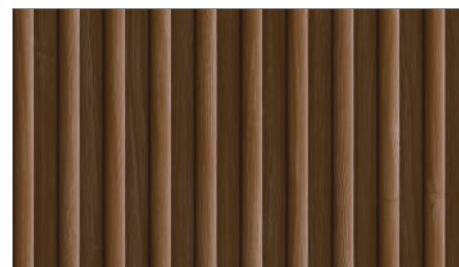
7729-3



7729-1



7729-2



7729-3



STONE EDGE

7735-3



7735-1



7735-2



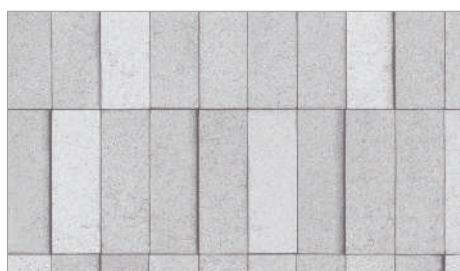
7735-3



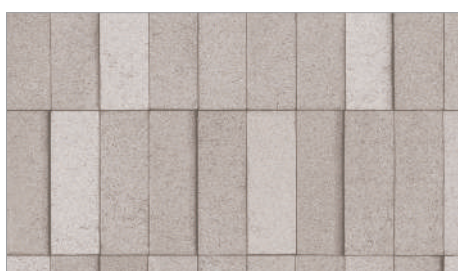
B R I C K



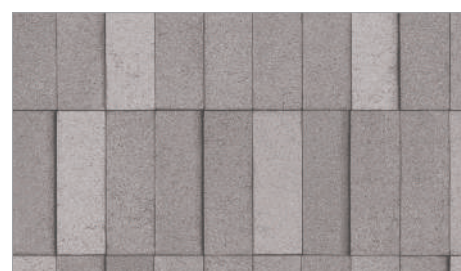
7721-2



7721-1



7721-2



7721-3



CONCRETE

7721-3 BRICK

Phase

2



ELEMENTS OF COLORS



7723-4



7723-1



7723-2



7723-3



7723-4



7723-1

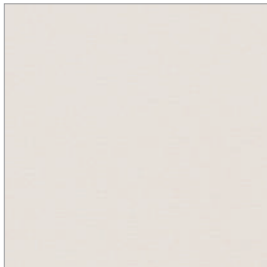


VIVID PARADISE

7723-3 + 7722-9



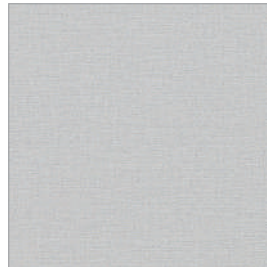
7722-1



7722-2



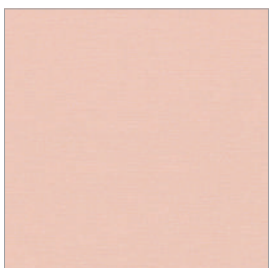
7722-3



7722-4



7722-5



7722-6



7722-7



7722-8



7722-9



7722-10

COLORFUL

7722-2 + 7722-6





7722-10

INFINITE COLOR

The colors are elegant & glamorous and
will catalyze all your attention.



7722-5

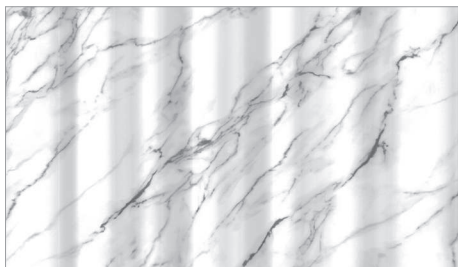
Phase 3



BLEND IN METAL
& TEXTURE



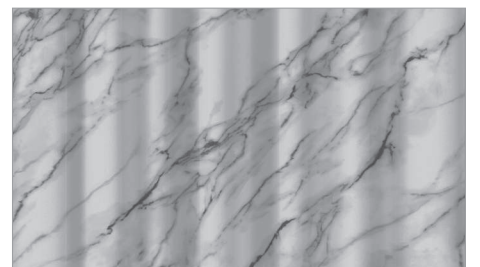
7724-1



7724-1



7724-2



7724-3



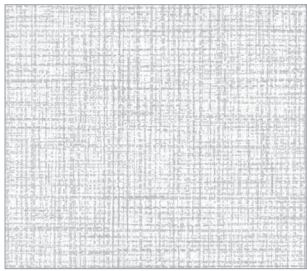
GLAMOUR

7724-2



TWEED

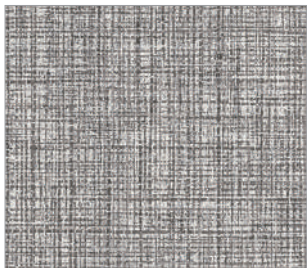
Like chic fashion for your home.
Tweed accent make sophisticated classic style.



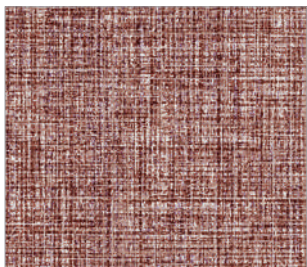
7734-1



7734-2



7734-3



7734-4



7734-4

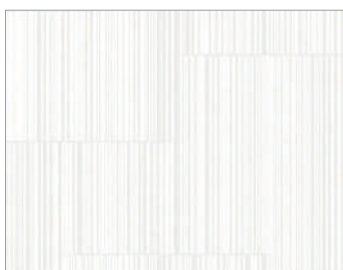


TWEED

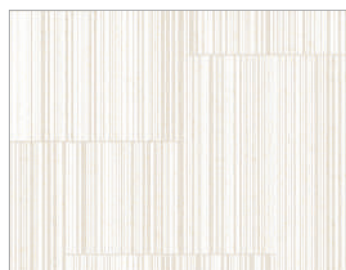
7734-2

Tweed bring texture and warms
your interior spaces

MODERNISM



7733-1



7733-2



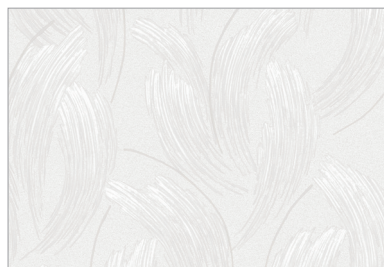
7733-3



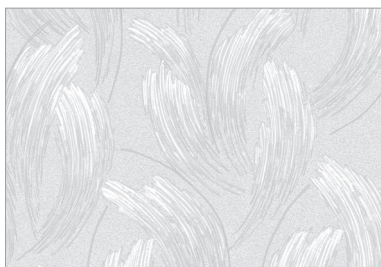
7733-4

PEACEFUL OASIS

7727-2



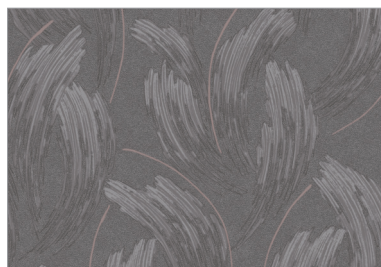
7727-1



7727-2



7727-3



7727-4

ARTISTIC

7727-3

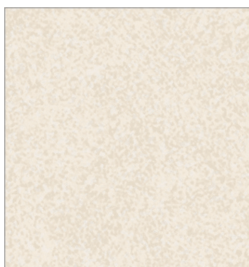




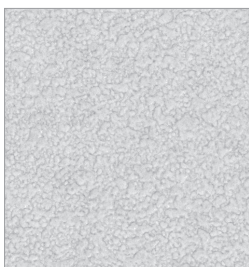
7727-4 + 7726-5



7726-1



7726-2



7726-3



7726-4



7726-5



7726-6

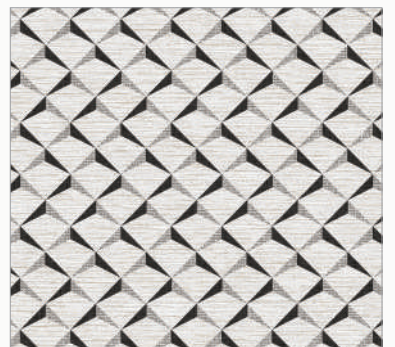
MODERN



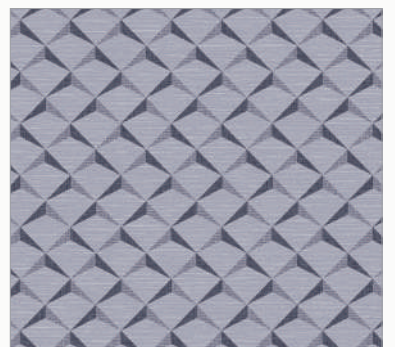
7731-1



7731-2



7731-3



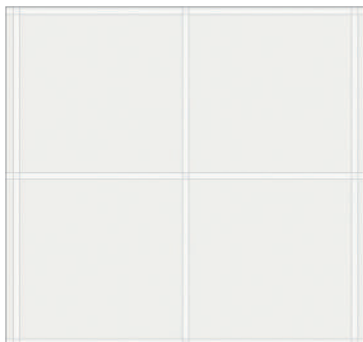
7731-4

7731-3



LEATHER

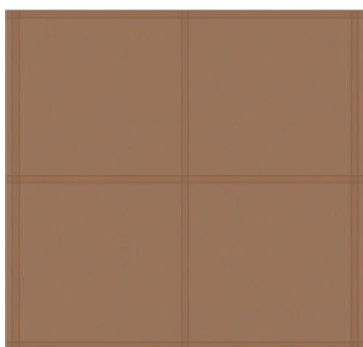
Wallpaper with realistic stitched detailing.



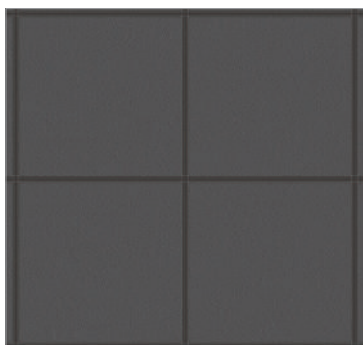
7732-1



7732-2



7732-3



7732-4



7732-3

LEATHER

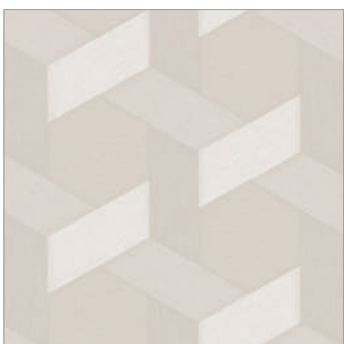
7732-4



MODERN



7730-4 + 7728-3



7728-1



7728-2



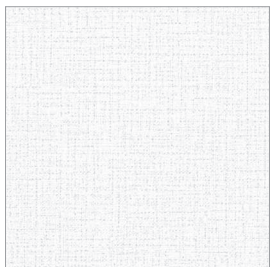
7728-3



7728-4



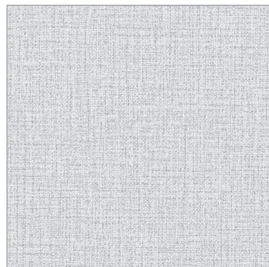
7730-2



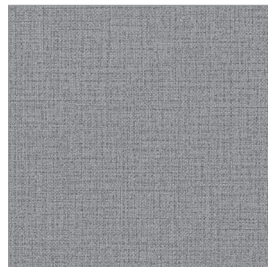
7730-1



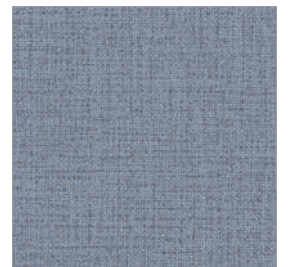
7730-2



7730-3



7730-4



7730-5





LUXURIOUS

7711-3



7712-2



7712-3



7711-2



7711-3



*The Art
of Space*

M & G C O L L E C T I O N

KS Wallcoverings

A representative Korean Wallpaper since 1979

We make your home unique!

| SURFACE PREPARATION

- Walls should be smooth, dust-free and dry before applying the paste, to avoid creasing.
- If the surface is not perfect, we recommend the use of a lining paper.

| CHECKING THE WALLPAPER

- Before cutting the rolls, ensure that they are all from the same lot no. and that they are in good condition with no color variation or other defects.
- For each claim, please enclose the label which indicates that lot no. After hanging 3 drops check the result. No claim is accepted for more than one roll.

| APPLICATION

- This product is hung by applying an even coating of paste either on the wall or on the reverse of the paper.
- Avoid squeezing the paste between the edges of the paper.
- The paste must not come into contact with the surface of the paper at any time.
- All traces must be removed before by lightly dabbing the surface with a moist, clean sponge.
- If paste is allowed to dry on the surface of the paper, it will cause discoloration.
- We do not accept any claim for damage resulting from paste being applied to the surface.
- Use a high-quality wallpaper paste.
- After having pasted half of one length of the paper, fold it back on itself and continued to paste the rest of the length in the same way.
- The soaking time should be very brief.
- Apply the first drop in a perfectly vertical way,
- A better ways to adhere the edges would be to paste a strip of the wall in line with the join of the paper.
- Hang the lengths, one next to the other, neatly joined together without any overlapping, taking care to match the pattern repeat
- To eliminate bubbles and to ensure a perfect contact with the wall surface, use a decorators wallpaper smoother or a dry cloth.
- Trim using a sharp blade and metal ruler.

| CONTACT US

· Manufacturing Plant

8798-50, Seodongdae-ro, Janghowon-eup, Icheon-si, Gyeonggi-do, Republic of Korea

· Homepage

www.ksgdw.com

· Seoul Sales Office

21, Dongmak-ro 6-gil, Mapo-gu, Seoul, Republic of Korea

INDEX

20 Patterns 80 Colors

NO.	PAGE	REPEAT	MATCH	NO.	PAGE	REPEAT	MATCH	NO.	PAGE	REPEAT	MATCH	
7738	-1	9		7730	-1	4, 80		7724	-1	49, 50		
	-2	10	60		-2	5, 81			-2	51	60	→ ←
	-3	8			-3	82	0		-3	52		
	-4	7			-4	78			-1	34		
-1	3	-5		85		-2	37					
7737	-2	6	60	7729	-1	20		7723	-3	38	60	→ ←
	-3	1, 2			-2	21	0		-4	31, 32		
	-1	16			-3	19			-1	41		
7736	-2	18	52	7728	-1	79		7722	-2	35, 42		
	-3	17			-2	83	15		-3	36, 45		
	-1	24			-3	77			-4	43		
7735	-2	26	60	7727	-1	63		7721	-5	44	0	→ ○
	-3	22			-2	61	52		-6	40		
	-1	54			-3	66			-7	47		
7734	-2	56	52	7726	-4	67		7712	-8	33, 46		
	-3	55			-1	25, 64			-9	39		
	-4	53			-2	65			-10	48		
	-1	57			-3	62	0		-1	29		
7733	-2	58	52	7725	-4	27		7711	-2	28	52	→ ←
	-3	59			-5	68			-3	30		
	-4	60			-6	23			-2	89		
	-1	74			-1	12			-3	87		
7732	-2	75	26	7715	-2	13		7714	-2	88	52	→ ←
	-3	73			-3	14	0		-3	86		
	-4	76			-4	11						
	-1	71			-5	15						
7731	-2	70	4.7									
	-3	69										
	-4	72										



PROJECT MANAGER
· ALEX KIM

| SYMBOLS



Straight Match



Half Drop Match



Free Match



Peelable



Lightfastness



Washable



Paste to Wallpaper

WIDTH. 1.06m

LENGTH. 15.6m/Roll

PACKING. 4Rolls/Box

MADE IN KOREA

Copyright © KS Wallcoverings
All Rights Reserved.

A Representative Korean Wallpaper

since 1979



www.ksgdw.com